

# 9~36V DC Input /12V DC Output 400W Power Module



Extended  
Temperature  
+85°C  
-40°C

### MAIN FEATURE

- Wide Input Range: 9V to 36V DC
- 12V DC Output up to 33 Amp
- Over voltage protection
- Over current protection
- High efficiency (typ. 91%)
- Extended Temperature -40°C to 85 °C

**SK710P**

**Specifications**

**System**

Input Voltage	9V to 36V (2P Terminal block)
Output	400W, 12V(2 x 2P Terminal block)
Power LED indicator	Yes
Power Efficiency	91%
Reverse Voltage Protect	Yes
Operation Temperature	-40 to 85°C
Storage Temperature	-40 to 85°C
Dimension	Dimension 90(L) x 60(W) mm
Over-voltage Protection	Yes
Over-Current Protection	Yes
Reverse Polarity	Yes
Over Temperature shutdown	Yes
Setup, Rise Time	500ms, 60ms
Power On LED	Yes

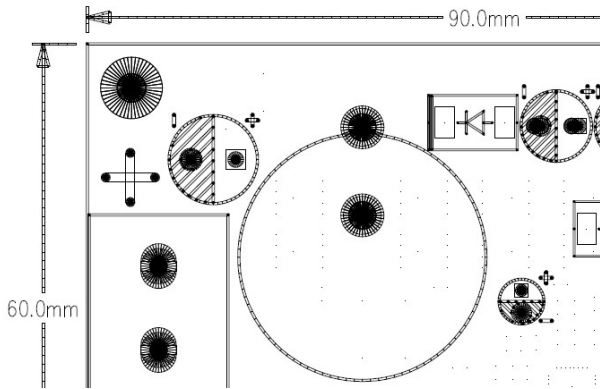
**Certification**

**Certification**

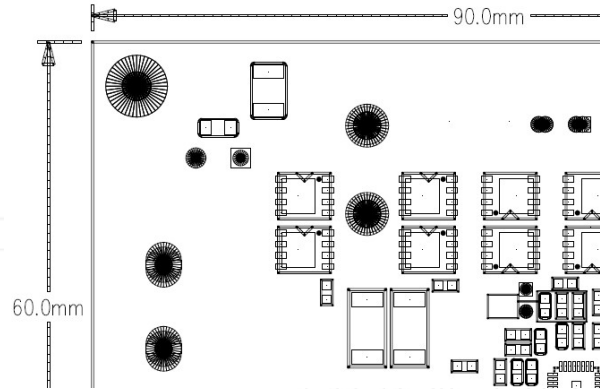
CE/FCC compliant	EN 61000-4-2: Air discharge: 8 kV, Contact discharge: 6kV EN 61000-4-4: Signal and DC-Net: 1 kV EN 61000-4-5: Leads vs. ground potential 1kV, Signal und DC-Net: 0.5 kV EN 55022, class A EN 61000-4-3: 10V/m
------------------	---

## Dimension

### Top Side



### Bottom Side



## Ordering Information

SK715 400W DC/DC Converter Module with input 9V to 36V , output 12V, operation temperature -40°C ~ 85°C